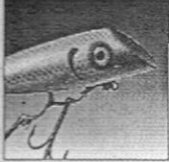




Lake Washburn Association NEWSLETTER

Spring 2001
Inside:



PAGE 2

From the President
By Douglas Johnson



PAGE 3

Lake Washburn
Residents look at high
water level



PAGE 4

Lake Washburn
Removal of Aquatic
Plants is Regulated



PAGE 5

Deep Portage
2001 SUMMER CAMPS
www.deep-portage.org

LAKE WASHBURN ASSOCIATION 2001 MEETING DATES

General Membership
Meetings

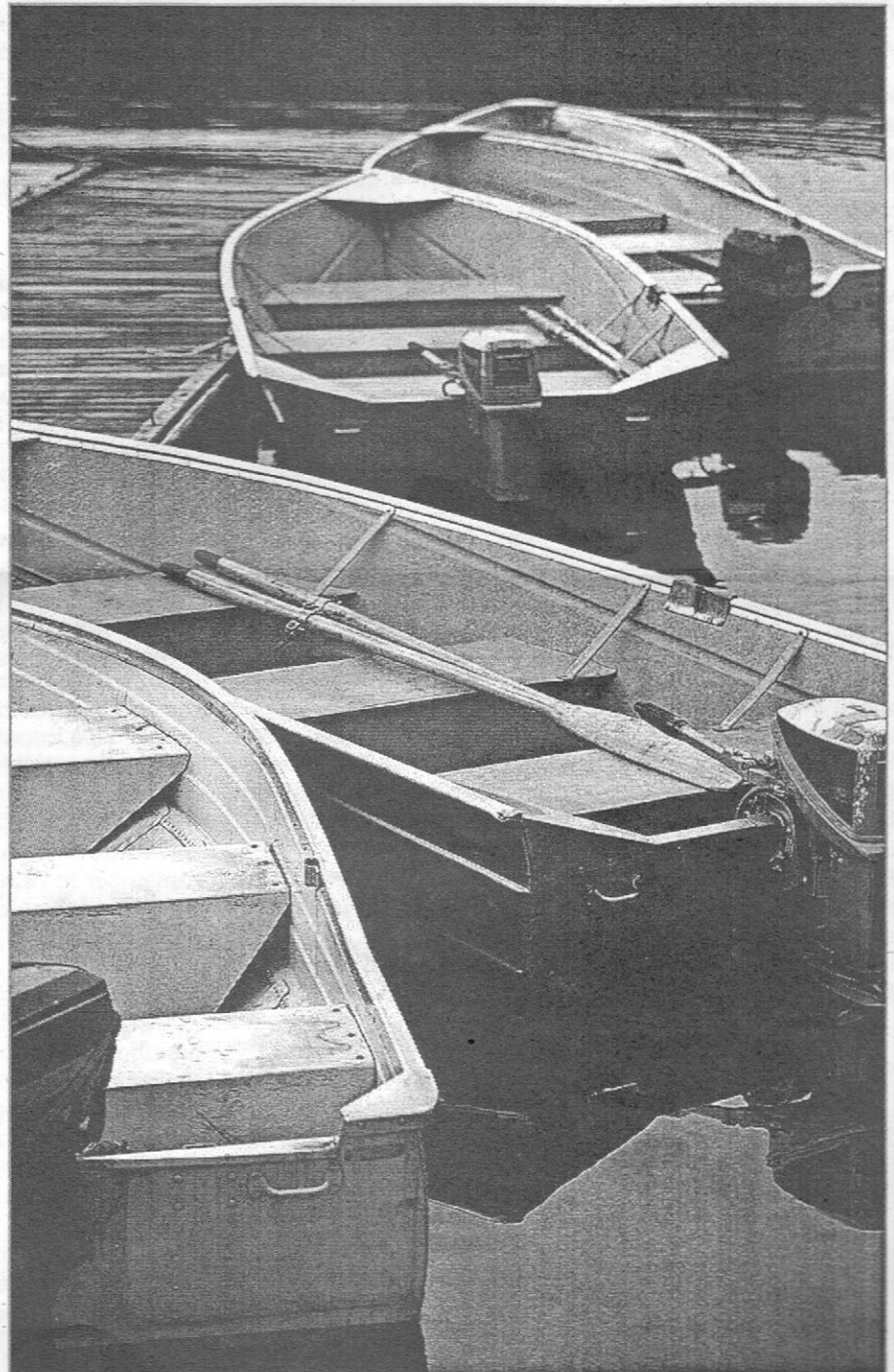
June 9

9 a.m. Outing Town Hall

August 11

5 p.m. Ice Cream Social
(Outing town Hall)

6 p.m. Outing Town Hall



Welcome to Spring 2001!



FROM THE PRESIDENT

By Douglas Johnson



NATURE IS ALWAYS HINTING AT US.
Robert Frost

We are increasing our dues to \$15.00, with the purpose of using the extra money to send young adults to Deep Portage Camp. Tuition is \$350.00 per young adult. For the first year, we are hoping to send four, two with Lake Association money and hopefully two with matching funds from Crow Wing Power and Light Trust Board. We have yet to apply and get them approved. IF NOT --- I challenged the board that my wife and I would sponsor a young adult, and would like to see the same from anybody else.

How better to be good stewards of the land, as God has asked than to send some young adults to some excellent camps. AND REMEMBER --- it's tax deductible!

There's information about the camps, plus an application blank in the newsletter. If you need additional blanks, please copy prior to use, from the newsletter. We need these ASAP or we'll miss Camp Forkhorn 1 and possibly Adventure Camp.

Send applications to our Secretary: John Houston
5627 Fehr's Drive NE
Remer MN 56672

Eligibility Rules:

1. Member's children or grand children have first priority.
2. Children who have not gone before have first pick. First come, first served.
3. Children who have gone in prior years are second pick.
4. Children of non-members, who live around Washburn, are third pick.
5. And if we still have a vacancy, children from the Outing community will be picked. We will find a way to use the camp money each year, with no carry over.
6. We will sponsor a young adult, a maximum of three times.

Those who go to camp, I request that we receive a letter, on what you thought of the camp.

A GOOD GAME FISH IS TOO VALUABLE TO BE CAUGHT ONLY ONCE. *Lee Wulff*

I participated in a MN DNR, request for comments, on the taking of fish on inland waters. In summary, I suggested the catch limits be reduced, on the majority, by 33%. I also requested that that special attention be drawn to lakes out of balance. That, for example, on lake Washburn we keep Northern Pike which are less than 21 inches --- no limit for now. And northerns over 34 inches be thrown back.

In my opinion, the fish committee has a labor-involved challenge. To get our eco-system back to as near normal as they can. It we continue with abstaining from walleye stocking, may we have yellow perch? Perch count is next

to nil. May we take a lot of small northerns?

Does anyone have a recipe for a good fish loaf?

TRUE WISDOM CONSISTS IN NOT DEPARTING FROM NATURE AND MOLDING OUR CONDUCT TO HER LAWS AND MODELS. Seneca

We have to solve, a problem with the water level on Lake Washburn. We discussed this in last August's general meeting. We also discussed about purchasing material to build Clemson levelers. We also discussed about the ownership of the ground on both sides of Dagget Brook, going to the beaver dam at the neck of Mule Lake. We knew that we did not have permission from the landowner to modify the dam. Having a moot point we did not even vote on it.

We also discussed the legal end of this concern. And found that IF we mechanically altered the beaver dam --- the following would be true. We would be liable for any degradation, either upstream or down.

There's no doubt in my mind that we could not get a consensus from the property owners around Lake Washburn. We have people who want to lower the level. We have people who want to see the water table higher. And we have, in my opinion, the last group --- which is to leave Mother Nature alone. My wife and I are one of the third group, and just leave it as is.

I know there was a small group who went up to Cass County Board to seek help. I also know that you represented yourself and not the association, as the paper read. I also know that their answers on your second meeting basically echo that who have spent a lot of time on the lake. Which is --- you learn to live with what you have at the time. Granted we have a high water table, and it's been this way for 10 plus years, but you live WITH IT. I can remember in 78, when in late fall --- you could walk around the entire lake along the shoreline. The water table was dangerously low.

I do not want to see an item like water level put a rift in our association. Could we use the expertise amongst our membership to aid people with erosion, low land next to the lake, weed beds, cat-tails, bulrush, etc., etc. We don't condone anything, which proves harmful to the lake, but surely with all our infinite wisdom we can come up with solutions! We won't solve all the problems, but we can assert some positive ideas.

From early may to mid - October, if you have any questions --- don't hesitate to call myself at 218-792-5185. If I can't answer, we will pass it to an office, or board member who may be able to.

Douglas Johnson
President, Lake Washburn Association



The following article appeared in The Pilot Independent on 1/18/01.

Land Department, residents look at high water level on Lake Washburn

There are some things in life humans can control. There are other things they cannot.

Still others can be controllable if enough money is thrown at the problem.

Based on those and other assumptions, Cass County Land Commissioner Norm Moody, Forest Resource Managers Jerry Laymon and Amy Ramquist, Soil and Water Conservation Service Manager John Sumption and nine Outing area residents conferred Jan. 8 at Deep Portage Conservation Reserve near Hackensack over what, if anything, can be done about Lake Washburn's high water, partly caused by beaver dams at the lake's outlet - and at what price.

One factor that cannot be changed is the presence of the permanent WPA dam at Washburn's outlet, all agreed. Another is last summer and fall's extraordinarily high rainfall. A third, to a degree, is the beaver. "The beavers will be with us always," Moody declared, echoing the Biblical admonition about the poor. "The only reason beaver dams are a problem is that there are people living around the lake." A few years back, the state's beaver population hit its historical high, leveled off and now has stabilized, he said.

Using aerial photos dating back to 1969, Moody showed how Washburn's water levels have fluctuated. In 1984 and 1991, the levels were as high as they ever have been, although one resident contented that last fall's level was the highest he'd seen since he bought the property in 1971.

Some people want the water level to stay high, others want it lower, and what's good for lake residents upstream may not be good for those downstream, the group admitted. Lake Washburn has a lake association, but there is no consensus among members on what course of action to take.

Some present told of losing 20 to 40 percent of shoreline

over the past two or three decades, of mature trees destined to die because their root systems are under water, and of shoreline erosion.

"Is erosion happening on undeveloped stretches"? Moody queried. "It's rare to have erosion where there's never been development."

Newly created beach areas, removal of vegetation that buffers wave action, like cattails and bulrushes, large speedboats and jet skis also have contributed to erosion, the group related.

Once lakeshore is developed, people can only control some things and not others, Moody responded. There are some ways to restore shorelines to a natural condition that resists erosion. Information on replanting natural vegetation in the lake, along the shore and on lakeshore property is available from the University of MN Extension Service, Cass County Office, at 218-547-7392.

If the group decides beaver control is necessary, they may have to raise the money themselves and contract with a professional trapper, Ramquist suggested. Some trappers will guarantee their work for a certain number of weeks or months after they are done trapping. Once the beavers are not present to repair a dam daily, it will deteriorate from the force of the water. Because the value of beaver pelts is low, it is unlikely anyone would do the work just for the pelts, she said.

The DNR allows beavers to be trapped, shot and taken in other ways, but not by poison, Moody said, but a conservation office must be notified before or afterward.

At the meeting's conclusion, the group agreed it needed additional information before deciding on a course of action. Sumption will research the size of the Lake Washburn Watershed, number of dams, rates of flow, and the historic lake levels. Armed with that information, the lake residents will try to decide what lake levels are appropriate and acceptable, and whether or not trapping out the beavers next spring and removing dams will do any good in the long run.

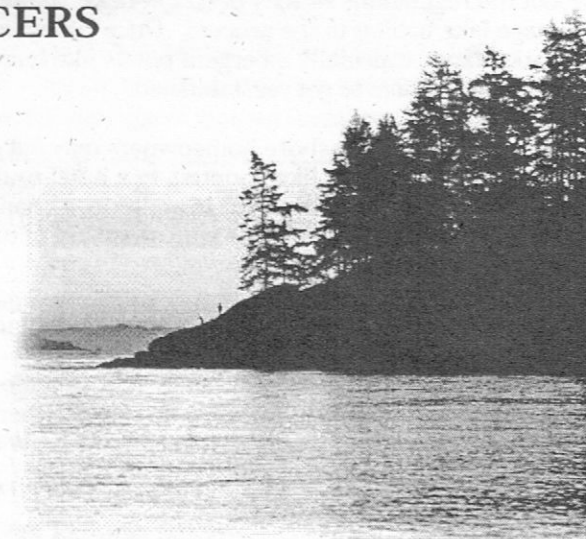
LAKE WASHBURN ASSOCIATION OFFICERS AND BOARD OF DIRECTORS

Officers

President	Douglas Johnson	(home #)	515.438.2670	218.792.5185
V. President	Ron Nichols		515.278.4459	218.792.5386
Secretary	John Houston		218.792.5540	
Treasurer	LaVon Heston		218.792.5455	

Directors

Gary Ahlquist	2 years	(lake #)	218.792.5452	612.448.6371
Rick Blackmon	3 years		218.792.5940	763.424.9154
Terry Carlson	1 year		218.792.5829	763.427.2792
Bill Herrick	2 years		218.792.5513	
Marv Hildreth	3 years		218.792.5692	913.492.7525
Jack Johnson	1 year		218.792.5432	612.920.9367
Judy Matherne	3 years		218.792.5533	763.420.4836
Rod McKinley	3 years		218.792.5228	
Dave Snesrud	2 years			612.753.2790



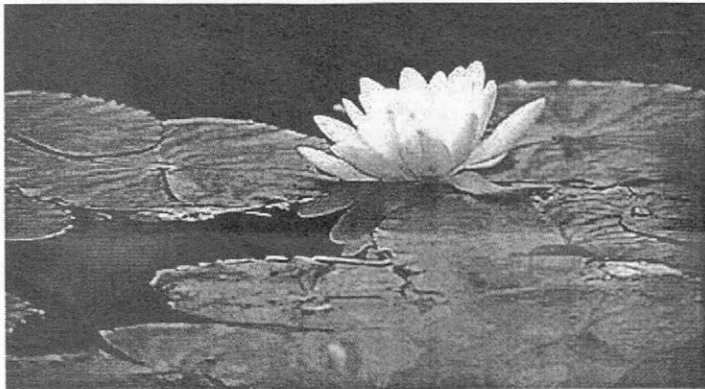


REMOVAL OF AQUATIC PLANTS IS REGULATED

Some lakeshore owners consider them a pest, but many fish consider them "home." Aquatic plants are a critical component of many Minnesota lakes. The plants provide habitat for fish, wildlife and waterfowl, according to the DNR. The plants also protect shorelines from erosion, and help maintain water clarity by filtering runoff sediments and nutrients.

But when lakeshore owners consider aquatic plants – especially those that emerge from the water – to be a nuisance, it sometimes prompts illegal removal.

"Aquatic plants may hamper the ability of lakeshore homeowners to use the lake next to their property," noted Jed Anderson, DNR aquatic plant management specialists.



"That causes some lakeshore property owners to break the law or unnecessarily remove plants that are important to lake ecosystems.

"Our conservation officers have noted an increase in violations," noted Norm Floden, a DNR Enforcement Division supervisor. "We're working to help inform people about the regulations so they don't get ticketed and don't damage lake habitat in the process. Once cut or removed, aquatic plants, especially emergent plants like bulrush, require a long time to get reestablished."

Without a permit, lakeshore homeowners may cut or pull submerged vegetation, like coontail, in a 2,500-square-foot area adjacent to their property. In addition, a channel 15 feet wide may be included from the lake ward end of the area extending to open water.

A permit is not required for aquatic plant control under the following conditions:

*the vegetation is removed physically (cut or pulled) and does not include bulrush, cattail, wild rice or other emergent vegetation (plants that eventually grow above the water's surface);

- *The cleared area sides not exceed 50 feet along shore, or one half the property's frontage width, whichever is less;
- *The total area does not exceed 2,500 square feet;
- *all vegetation cut or pulled is immediately removed from the water;
- *The cleared area remains in the same location each year.

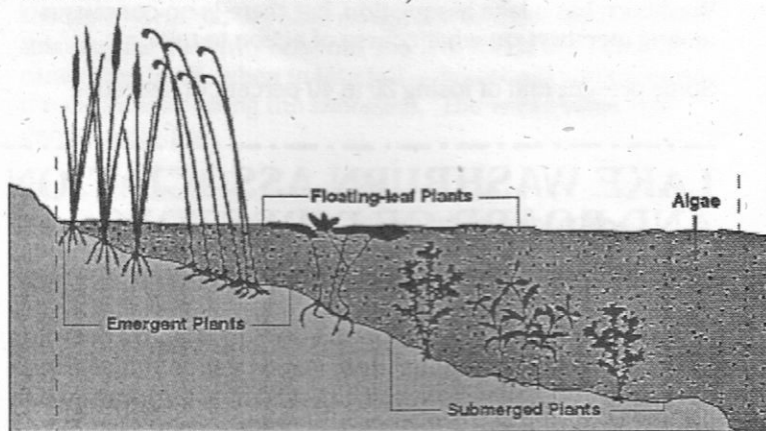
Lakeshore owners may also cut or pull water lilies in a channel 15 feet wide extending to open water.

A permit is required to:

- *control emergent vegetation, like bulrush, cattails or wild rice; or
- *Use herbicides to control aquatic vegetation; or
- *Control floating leaf vegetation in areas larger than a 15 foot channel; or
- *Control more than 2,500 square feet of submerged vegetation; or
- *use an automatic unintended aquatic plant control device, such as the Crary WeedRoller.

DNR aquatic plant control permits cost \$20. In most cases, permits must be obtained annually. People who are unsure whether their plans require a permit, or who would like additional information, should contact their area or regional DNR Fisheries Office.

For more information about aquatic plants, call the DNR Information Center toll free 1.888.MIN-NDNR (1.888.646.6367), ask for the Ecological Services Section. A free booklet, "A Guide to Aquatic Plants Identification and Management," is available to help lakeshore homeowners identify aquatic plants, understand how they benefit lakes, and understand regulations regarding aquatic plant control. (Thanks to Jack and Grace Schuller for bringing this article to the attention of the newsletter.)



← Littoral Zone →

In many Minnesota lakes the littoral zone contains all plant types: emergent, submerged, floating-leaf, and algae.



BOAT RAMP MONITORING

Each year the lake association monitors the boat ramp at the Clinton Converse campground on opening weekend, 4th of July and labor day. The primary objective of this monitoring is to prevent the spread of Eurasian Water Milfoil into Lake Washburn by watercraft that have been in waters contaminated with milfoil. People interested in helping with the monitoring program this year should contact Bill Herrick at 218.792.5513. A special thanks to the following association members that volunteered last year:

We would also ask that you remind any guests that you have bringing watercraft to the lake that they thoroughly clean their watercraft and trailer before putting it into the lake.

Dave Anderson
 Gerald Ballard
 Karen & Greg Hosch
 John Huston
 Don Peterson
 Dave Snesrud
 Pat & Ron Behning
 Terry Carlson
 Paul Cartwright

Bob Holman
 David Judd
 Pat & Bill Herrick
 Jan & Rollie Hron
 Jean & Jack Johnson
 Pat Maranda
 Jane & Rod McKinley
 Ron Nichols
 Bert & Vic Stanchfield

Cliff Waters
 Jane & Ron Gaskill
 Sara & Marv Hildreth
 Ted Johnson
 Marg & Frank Whitley

DEEP PORTAGE 2001 SUMMER CAMPS



Below is a summary of summer camps offered at Deep Portage. The Lake Washburn Assoc. will provide full tuition scholarships to 4 youths in 2001 - see President's Letter for details on scholarships. Additional information on camps and Deep Portage is available by calling them at 218.682.2325 or at their web site at www.deep-portage.org

ADVENTURE CAMP: JULY 1 - 6 for youth 13 - 16 years old, offers a variety of outdoor recreational pursuits.

AQUATICS CAMP: AUGUST 5 - 10. For youth ages 9 - 14, offers a look at Minnesota's unique aquatic environments. Campers will spend week fishing, learning about bogs, ponds, lakes, streams and other aquatic eco-systems.

FISHING CAMP: JULY 29 - AUGUST 3 for campers 12 - 16 years old. Camp covers all aspects of fishing: fish management, fish habits, and fly-fishing. A perfect camp for the youngster who can't get enough fishing!

FORKHORN I (INCLUDES DNR FIREARMS SAFETY)
 Session I June 17-22+Session II June 24 - 29+Session III July 1 - 6. For campers 12 - 16, sponsored by the MN Deer hunters Assoc. Camp provides participants with the basic knowledge necessary for becoming an ethical, responsible and, successful deer hunter.

FORKHORN II (ADVANCED FORKHORN CAMP) JULY 15 - 20 This camp is for graduates of Forkhorn I.

UPLAND BIRD CAMP: JULY 22 - 27 For campers ages 12-16. Sponsored by the Ruffed Grouse Society and Pheasants Forever. Participants will learn basics of Upland Bird hunting.

YOUNG WOMEN IN SCIENCE: AUGUST 5 - 10. Designed to provide girls ages 12-16 with a week of field science, visit scientists in the workplace, create projects, and discover the rich heritage of woman scientists.

Send Completed Form To: John Houston
 5627 Fehr's Drive NE, Remer, MN 56672

Name & Address: _____

Age: _____

Camp Interested In: _____

Parents/Grandparents Members? _____

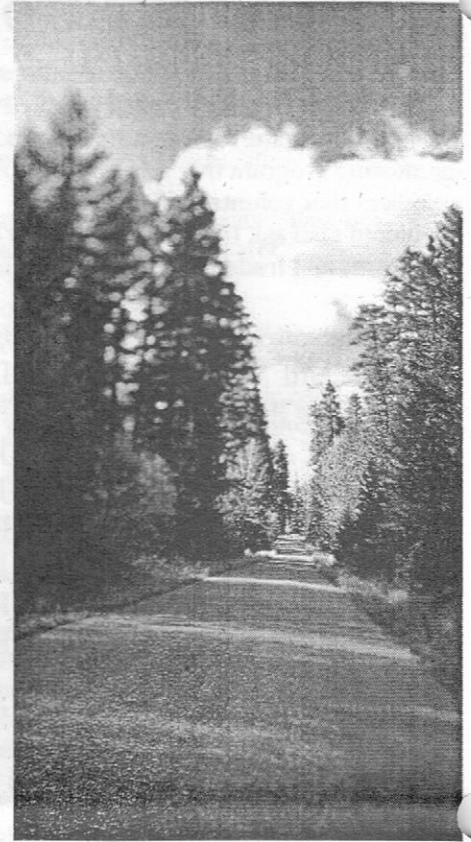
Non-members? _____

Have You Been To Camp Before? _____



LAKE WASHBURN ASSOCIATION 2000 FINANCIAL STATEMENT

1/1/00 Beg. Balance		766.07
Income		
Dues	2350.00	
Ecology	155.00	
Hydrolab	50.00	
Fish	145.00	
Dry Well	100.00	
General	440.00	
Other	<u>223.00</u>	
Total	\$3,463.00	\$4,229.07
Disbursements		
Assoc. Dues	25.00	
Copy	544.04	
Postage	115.56	
Supplies	14.99	
Donations	600.00	
Misc.	282.00	
Fees	<u>26.00</u>	
Total	1607.59	
Checking Account Bal 12/31/00		\$2,621.48
Other Assets		
Money Market		\$1,212.70
CD's - 1st Bk Crosby		
#30591		\$1185.44
#30590		\$6,353.00
CD - Pine River		
#500912		42906.61
Total other assets		\$11,657.75
Total assets		\$14,279.23



COUNTY ROAD 48 CLEANUP

Thank you, to all volunteers who showed last September. I estimate we picked up over 300 gallons of junk, in not the best weather.

Special thanks to Richard and Diana Huss, who always seem to show, in spite of weather. And last but not least, thanks to the families who brought their children to help. What better way to show responsibilities of owning property, than by example?

The year 2001, yields the dates of : Saturday 26 May, and Saturday 01 September. We always start at 9 a.m. and we're usually done before 11. We meet at the public landing parking lot, at the Clinton Converse campground. Douglas Johnson

2000 LAKE WASHBURN ASSOCIATION FINANCIAL STATEMENT



THIS & THAT FROM RON NICHOLS

- Cannister Station Hours: Saturday 10-12, Sunday 12-4, Monday 10-12, and Wednesday 4-6.
- U.S. Post Office Hours: Monday - Friday 8-Noon and 12:30 -4:30, Saturday 8-10:15.
- Outing N Outing: July 7, with fireworks at dusk.
- Emily Days: July 21
- Bingo: 7 p.m. every Tuesday at Terry's Place.
- Cass County will have a hazardous waste pick-up day in Outing at a date to be announced.
- Call the Crooked Lake Maintenance Building at 792-5918 to report road problems, etc.
- You must use 911; the old emergency numbers are no longer in use.
- Contact the Outing website at outingmn.com for pertinent information on events, etc.
- June 9 -- General meeting for the Washburn Association at 9 a.m. Guest speaker is Tim Brastrup, area fisheries supervisor. Topics will be 1. Fish catch limits, slot limits, etc. 2. Mercury contamination of Washburn and surrounding lakes.

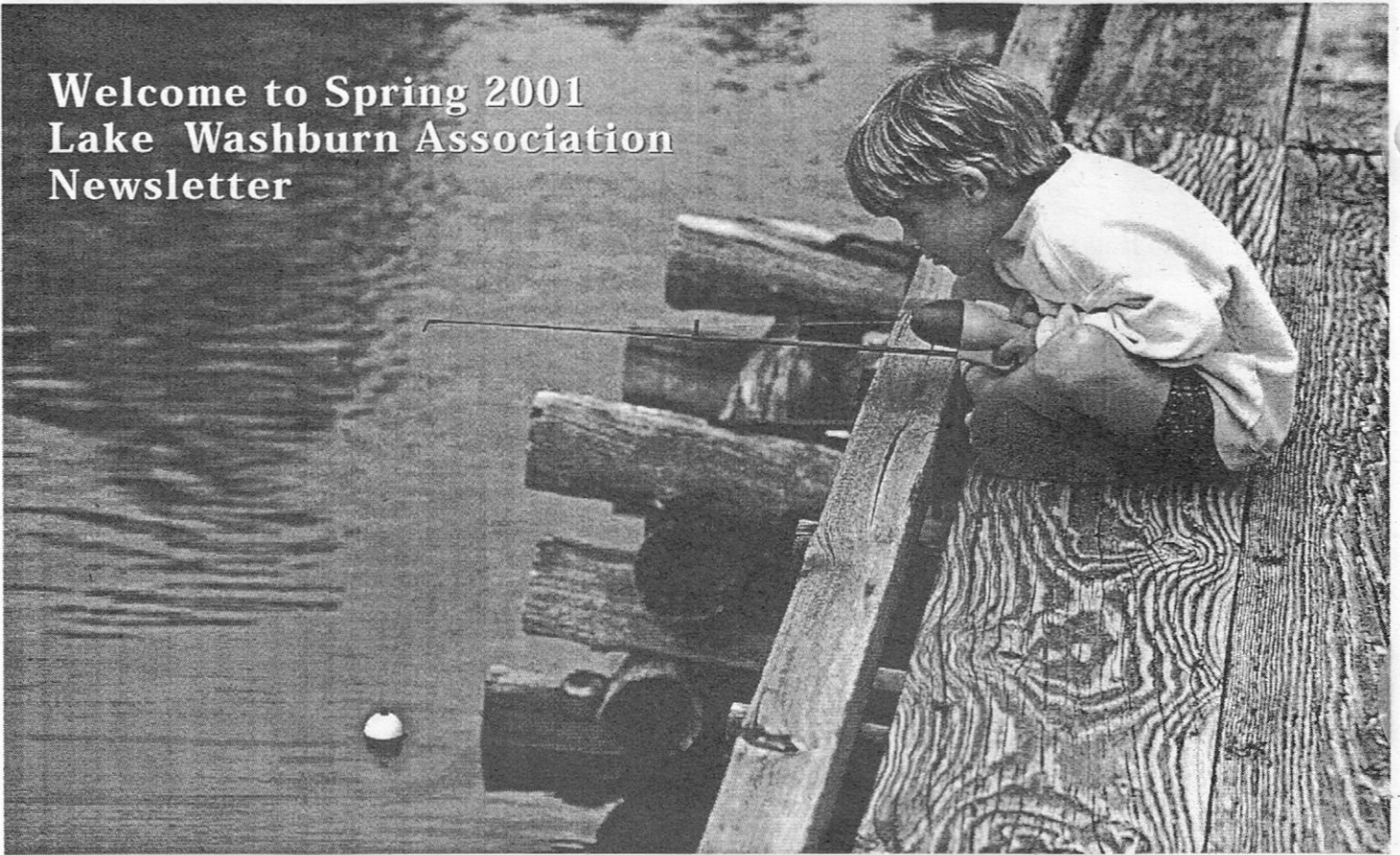


Emily Days
Bingo

Outing N Outing

Fireworks

Welcome to Spring 2001
Lake Washburn Association
Newsletter



 Lake Washburn Association
NEWSLETTER

BOX 26, OUTING, MN 56662



55420X5323 03

